

STC-SLAC Series - Data/Signal Line Protection

The STC-SLAC Series surge suppressor is specifically designed to protect sensitive electronics that contain both low voltage control circuit signal lines and 120 volt AC Power. It combines the technologies found in the STC-642 signal line protector and the STC-HSP advanced three-stage hybrid solid state power line protector. The rugged waterproof NEMA 4X polycarbonate enclosure is suited for installation in the most severe environments. The AC power suppressor features filtering of common and normal mode noise and MOV protection for nanosecond response time. The signal line protector incorporates a design consisting of gas discharge tubes (GDT), thermal resettable fuses (PTC) and silicon avalanche diode components (SAD) for premium protection of signal lines up to 36 volts.




Application

- Water treatment facilities
- Industrial manufacturing plant
- Chemical processing plants
- Wastewater treatment facilities
- Agricultural (farms and processing)
- Fish hatcheries
- Food processing

Features

- Surge suppression for AC power and low-voltage signal lines
- NEMA 4X polycarbonate enclosure
- Series hybrid AC suppressor/filter
- User-replaceable protection modules
- 15 Amps replaceable fuse for AC module
- Test jacks for signal line monitoring
- "Power ON" LED indicator
- Internal replaceable fuse
- Screw terminals for ease in serviceability
- Five year limited warranty

Certifications and Compliances

-  Listed
- UL 497B
- RoHS Compliant

Specifications

Description		AC Power	
Technology		Three-Stage Series Hybrid	
SPD Technology		GDT/PTC/SAD	
Voltage Clamp		325 Vac	
Input Voltage		120 Vac 50/60 Hz	
Output Voltage		15 Amps Max	
Response Time		<5 nanoseconds	
Maximum Surge Current (8x20 μs)		39 kA	
Parameter	Normal Mode (L-N)	Common Mode (L-G) (N-G)	
IEEE 587 CAT A Ring*	172 V	280 V	
IEEE 587 CAT B Ring*	205 V		
IEEE 587 CAT B Impulse*	330 V		
Certification		UL 1449, Type 2	
Description		Signal Line	
Technology		Three-Stage Series Hybrid	
Peak Surge Current (8x20 μs)		10 kA	
Response Time		<5 nanoseconds	
Voltage Clamp		36 Volts	
Maximum Current		150 mA	
Series Resistance		5 Ohms (typical)	
Certification		UL 497B	

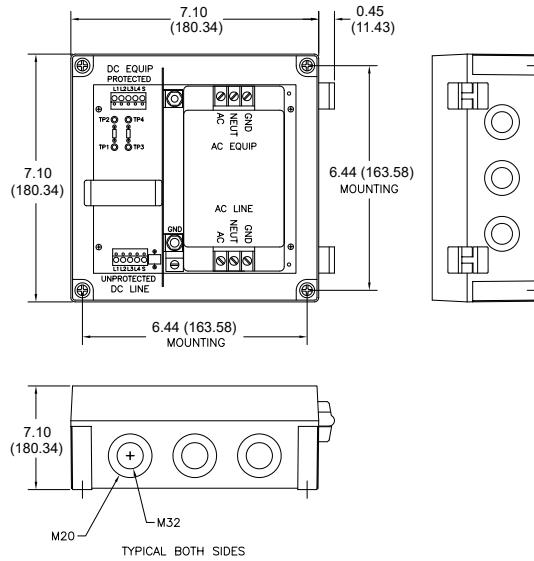
* Measured from zero volts, to 90° Phase angle

STC-SLAC Series - Data/Signal Line Protection

Selection Table

Catalog Number	Description
STCSLAC12036	Surge Suppressor (STC-642 signal line protector and the STC-HSP module)
STCHSP121BT1RU	Replacement AC module
STC642036	Replacement signal line module

Dimensional Drawing



System Design

